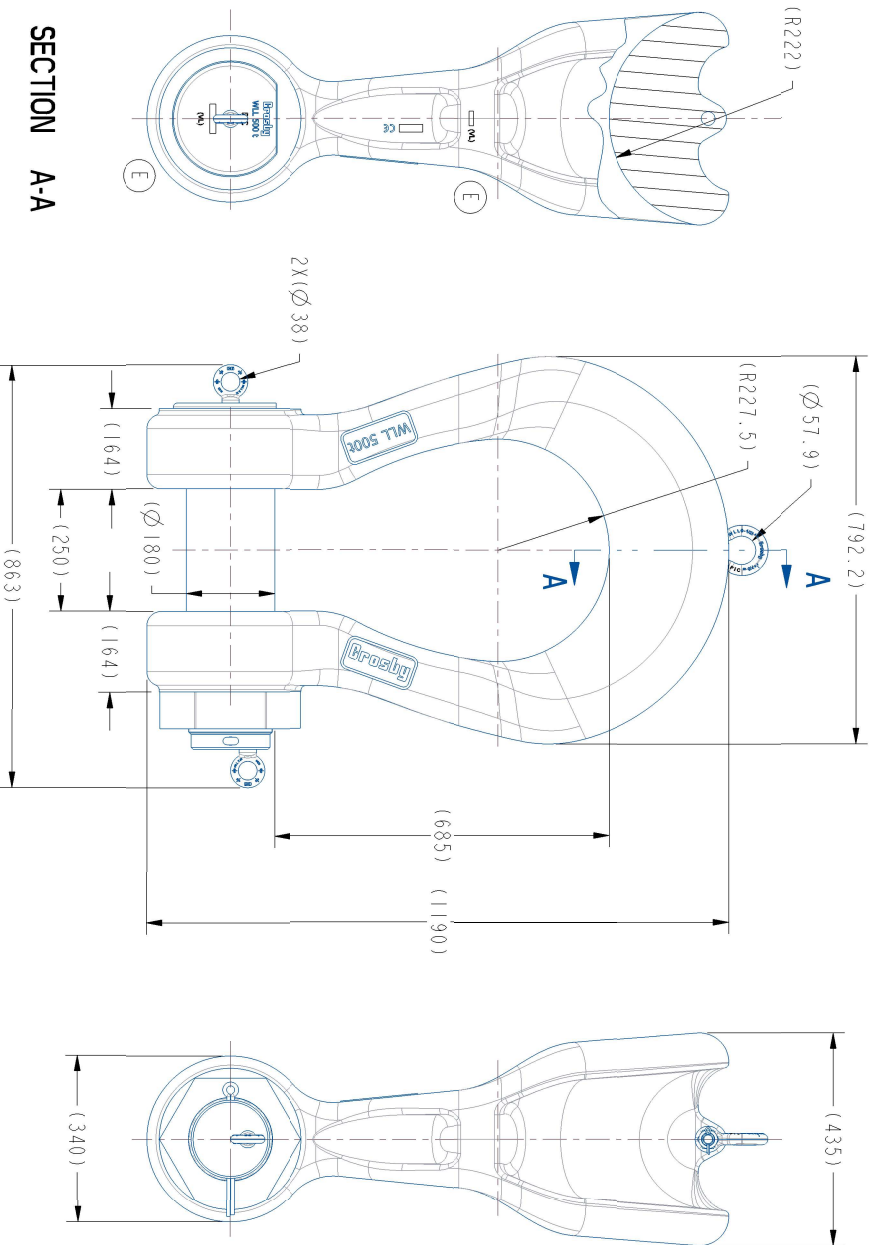


REV	DESCRIPTION	BY	DATE	CN
A	RELEASE TO PRODUCTION	REBEALL	24-FEB-2022	33990
B	UPDATE PL STATEMENT NOTE 3 ADD COATS TO NOTE 5 BOW & BOLT MODEL UPDATES EYE BOLTS WERE M16	J.LEWIS	14-DEC-2022	34308
C	BOW, SPLIT PIN & BOLT MODEL UPDATE:	J.LEWIS	08-AUG-2023	34541
D	ADD REPLACEMENT TABLE; UPDATE FORMAT; UPDATE MODEL; ADD (VL) ADD NOTE 6	J.LEWIS	20-FEB-2024	34715
E	SPLIT PIN WAS 230 LONG; UPDATE PROOF TEST NOTES; UPDATE (VL) LOCATIONS	J.LEWIS	29-JUL-2024	35106



- NOTES:
- WORKING LOAD LIMIT: 500 METRIC TONS
  - Ø 5:1 DESIGN FACTOR.
  - PROOF TEST LOAD: 1000 METRIC TONS (2XWLL)(MFG ONLY)
  - CUSTOMER OR THIRD PARTY PROOF LOAD SHALL NOT EXCEED 750 METRIC TONS (1.5XWLL)
  - TESTING AND DOCUMENTATION PER ITP-2022-0044.
  - COATING:
    - BOW, NUT: ALKYD-PRIMER RAL 9006. (2-3 COATS)
    - BOLT: ALKYD-PRIMER RAL 3001. (2-3 COATS)
    - BOW AND BOLT SHALL BE STAMPED "(VL)"; SIZE 10

SERVICE PARTS		UNLESS OTHERWISE SPECIFIED: ALL DIMENSIONS ARE IN MILLIMETERS. DIMENSIONS ARE BEFORE COATING BREAK ALL SHARP EDGES. MACHINE SURFACES.		COATING: SEE NOTES		STATUS: PRODUCTION		TITLE: SHACKLE WIDE BODY G-2160 ASSEMBLY 500 TONNE	
PN	DESCRIPTION	MATERIAL:		HEAT TREATMENT:		DRAWN BY: REBEALL		APPROX WEIGHT: 795.64 kg	
1511033	500t 2160 BLT KIT	N/A		N/A		DATE: 24-FEB-2022		SCALE: DRAWING NO: 1021345	
1019533	SHK ANCH GL 6-1/2t G2130	N/A		N/A		ENGINEER: J.LEWIS		PART NO: 1021345	
1045995	BLT EYE MACH M-20	N/A		N/A		PRODUCT LINE: 2160		SHEET 1 OF 1	
3102604	ISO SPLIT PIN 16MMX250MM	N/A		N/A		REFERENCE: DNVGL-ST-0378; ITP-2022-0044; RAL 9006; RAL 3001		DISCLOSURE OF THIS DOCUMENT IS NOT PERMITTED UNLESS AUTHORIZATION IS EXPRESSLY GRANTED IN WRITING BY THE CROSBY GROUP LLC	
3102604		N/A		N/A		N/A		N/A	